



priority™

WMS Module

All-in-One Warehouse Management System

Warehouse management is a complex and time-consuming process. Processes such as inventory counts, warehouse layout and optimization, picking, and replenishment require high visibility and accuracy. By tracking, measuring, and predicting sales trends, you can streamline processes and increase efficiency. Warehouse Management Systems are designed to help companies manage their business better while ensuring your logistics are in order to meet all timelines while keeping a competitive edge in today's fast-paced environment.

Featuring powerful management tools, Priority's Warehouse Management System (WMS) allows your organization to control its warehouse operations by delivering a comprehensive solution that optimizes your end-to-end inventory operations, making your work easier, more accurate, and more productive.

priority

www.priority-software.com | priority@priority-software.com

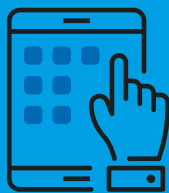
Warehouse Management Made Easy

Priority's highly scalable WMS utilizes unique customization features and advanced AI-based capabilities that allow companies to automate workflows, operate sophisticated warehousing & distribution processes, and quickly and easily adjust to changing customer demands and market conditions.

Priority WMS allows you to manage your entire business on a single platform without the hassle of working on multiple complex systems, enabling you to streamline your logistics cycle with real-time visibility, resulting in rapid and accurate responses to inventory movements, and facilitating holistic control over warehousing operations and resource optimization.



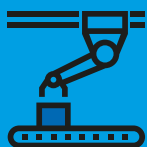
Fully automate your day-to-day warehouse operations with a dedicated solution



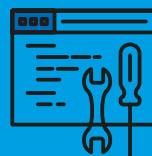
One system with a single source of truth



Backed by a complete ERP toolbox



Immediate onboarding



One-stop shop - Implementation, dev. & support

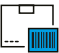





priority

www.priority-software.com | priority@priority-software.com

Simplify processes with simple & single screen reporting

- ✓ Manage your data on a single system. No synchronization
- ✓ Automate workflows and optimize processes
- ✓ Waves optimization (picking, put-aways, and replenishments)
- ✓ Maximize warehouse space usage
- ✓ Simplify tracking and monitoring
- ✓ Get real-time data reporting
- ✓ Save resources and improve operational efficiency
- ✓ Automate and improve data collection and accuracy
- ✓ Empower teams with higher visibility

Inventory, shipping & delivery at your fingertips

-  **Smart barcode scanning**
a single barcode for multiple entities, such as item number, batch number, serial number, customer order number, supplier item number, and more.
-  **Document & Label printing**
print documents & labels directly from the mobile device to the warehouse printer.
-  **Automation**
auto-fill fields to initiate an auto-reporting sequence
-  **Customization**
Easily Customize data entry fields. Physical or virtual keyboard support
-  **Flexible UI**
Customize warehouse tasks, forms, and field visualization.
-  **Single screen reporting**
with a dedicated UI/UX for data entry, maximum data in minimum clicks.



priority.



Packages offering

Perfectly developed to deliver a unique solution that fits for you

Choose the right WMS package for your needs and start leveraging your warehouse operations!



WMS-Standard (User Directed)

Features

Manual pick by order
All barcode types support
Auto Doc & Label printing
physical/Virtual keyboard
Single screen reporting
Minimum clicks UX
Customizable UI

Best fit for

1 - 5 Storekeepers
1 - 20 Orders per Day
Small warehouses



WMS-Advanced (System directed for picking)

Features

All Standard features, plus

Pick by order
Pick by item
Issue to assembly
Issue of supplies
Bulk issue to floor
Bulk issue to subcontractor
Issue to kit

Best fit for

Unlimited Storekeepers
Unlimited Orders per Day
Medium-size warehouses
Batch/Lot-Controlled Stock
Customer Stock



WMS-Pro (Fully System directed)

Features

All Standard features, plus:

Put away
Replenish for inventory
Replenish for orders
Replenish for kit items
Vendor return
Disposal
Stock count
Pallet/Unpallet

Best fit for

Unlimited Storekeepers
Unlimited Orders per Day
Distribution centers
Batch/Lot-Controlled Stock
Customer Stock

priority.